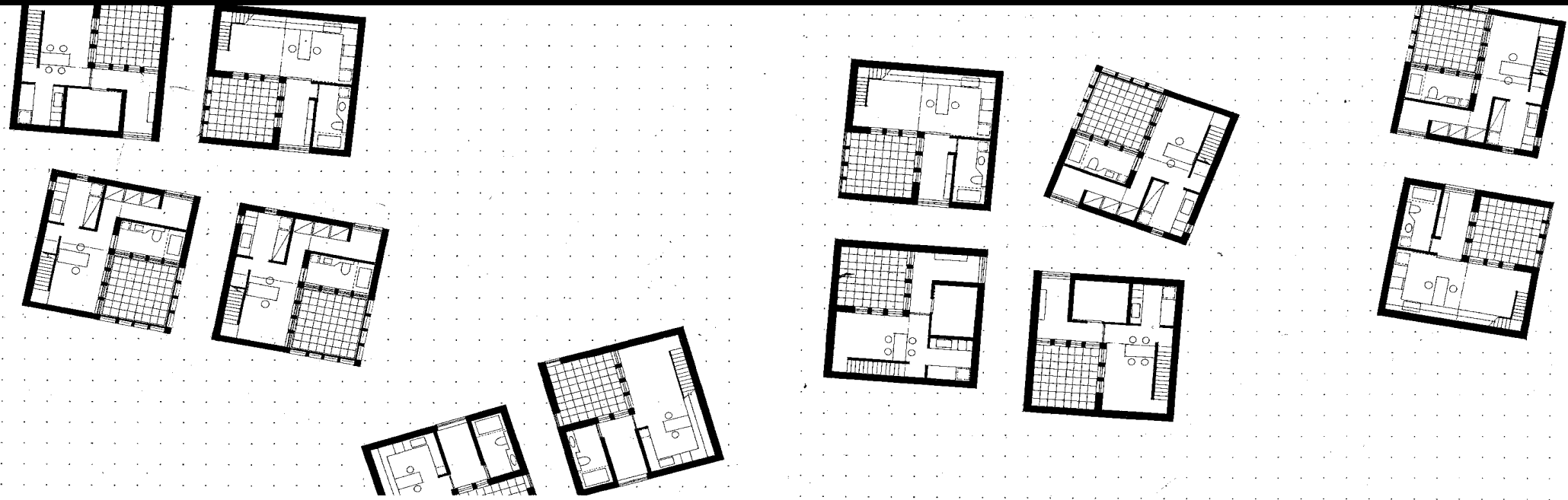
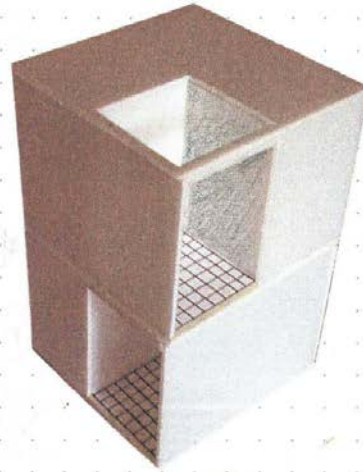




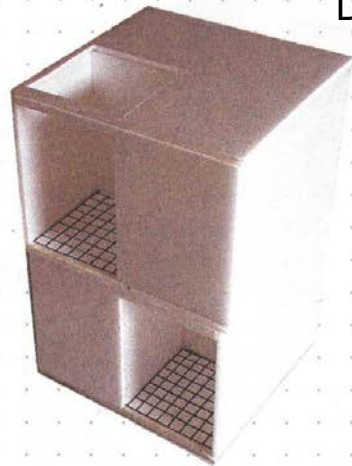
COURT HOUSE PROGRAM for The DESIGN ZONE in QATAR





UNIT x 2

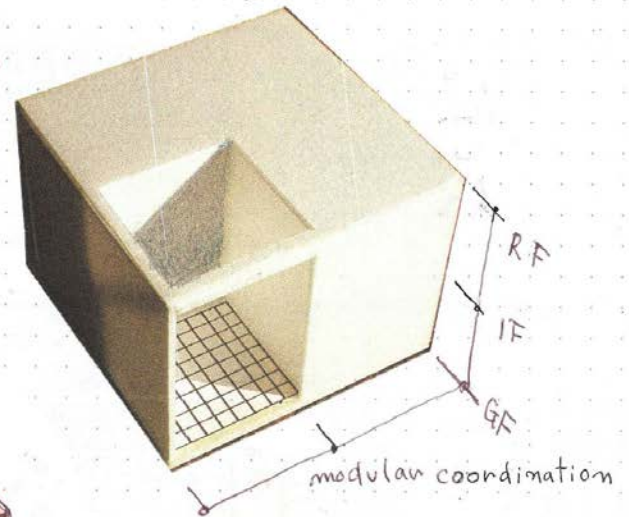
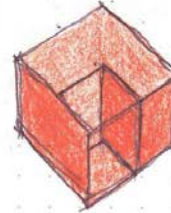
Double type



RF
3F
2F
1F
GR

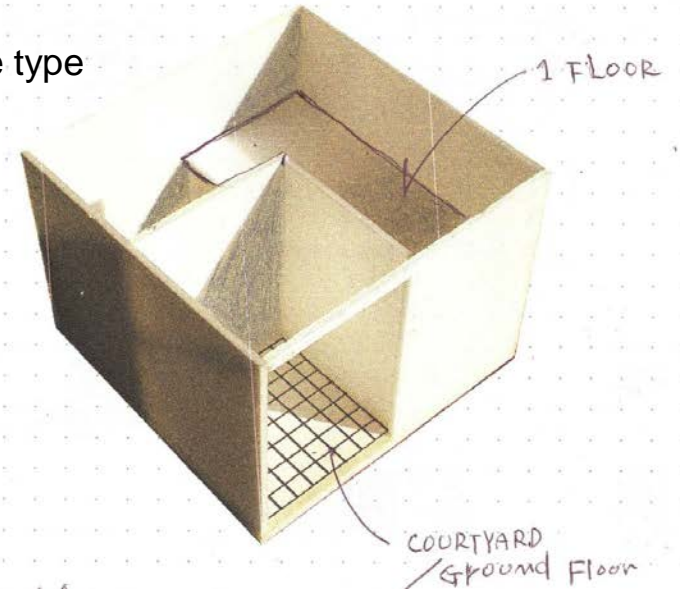


PRIMITIVE UNIT



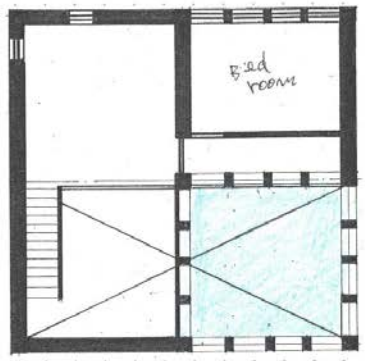
UNIT x 1 (EXTENSION)

Single type

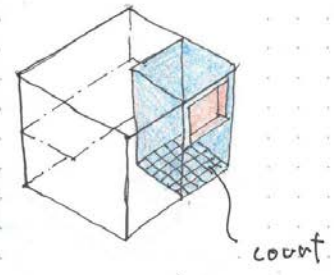


Key unit - A type

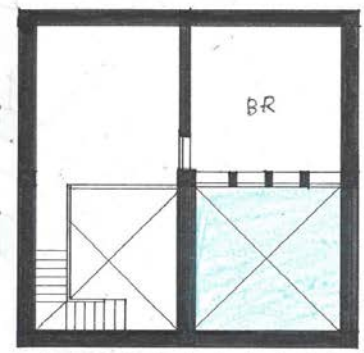
key unit - B type



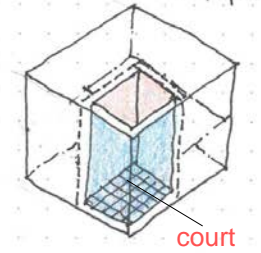
Key Unit - a
- side light



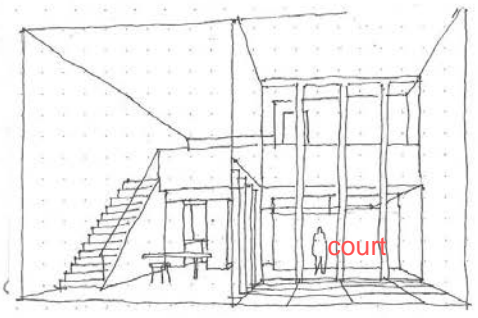
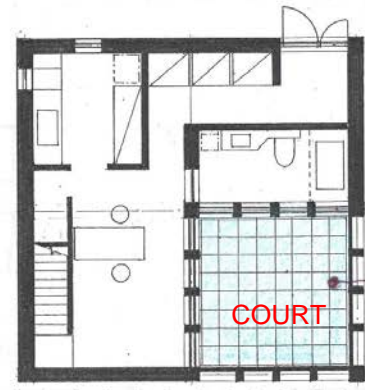
UPSTAIR



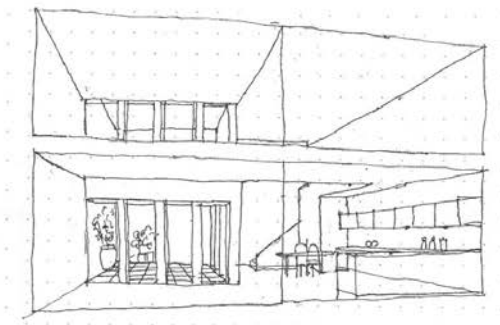
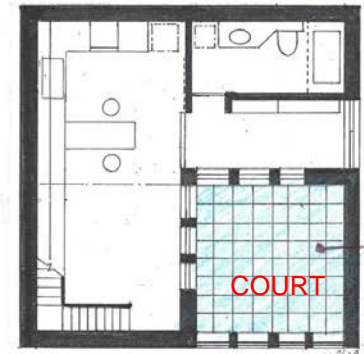
Key Unit - b
- Top light



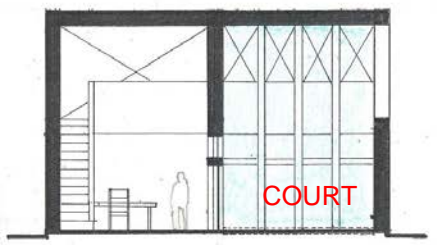
UPSTAIR



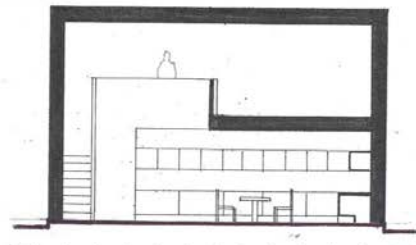
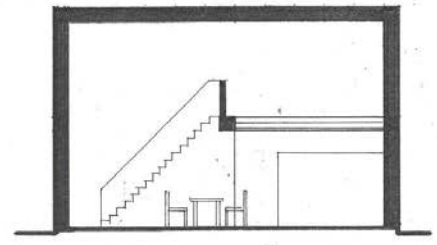
DOWN STAIR



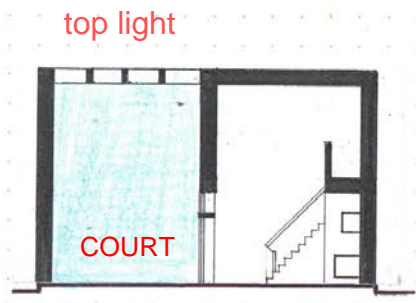
DOWNSTAIR



SECTION

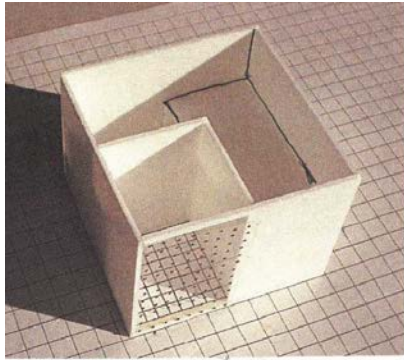


SECTION



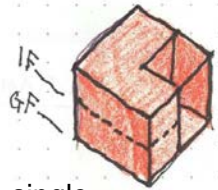
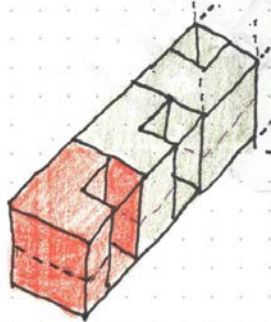
top light

Outline of basic structure

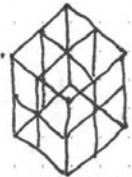


Base unit of court house

Connection of single type



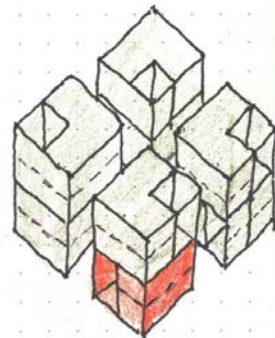
single



skeleton

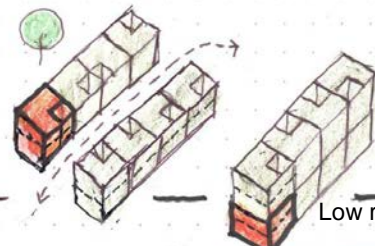


2 UNITS one pair

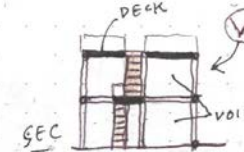


ONE BLOCK

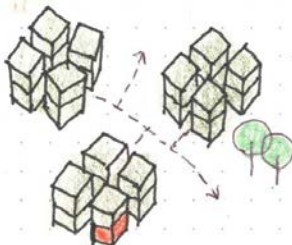
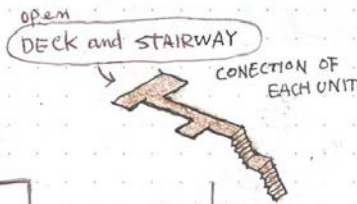
Connection of double type



Low rise housing type

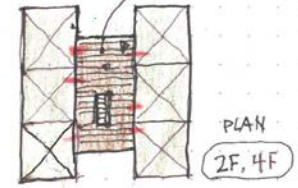


open space void lattis fram

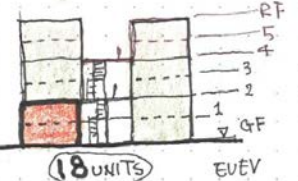


one block

Outside deck

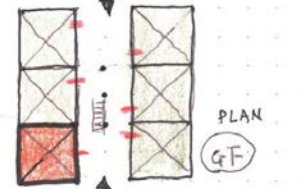


PLAN 2F, 4F

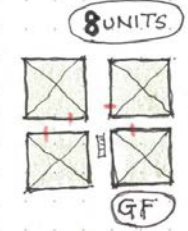


18 UNITS

ELEV

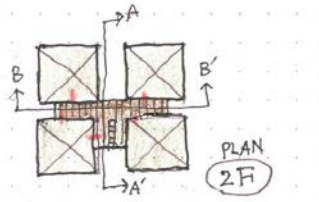


PLAN GF



8 UNITS

GF



PLAN 2F

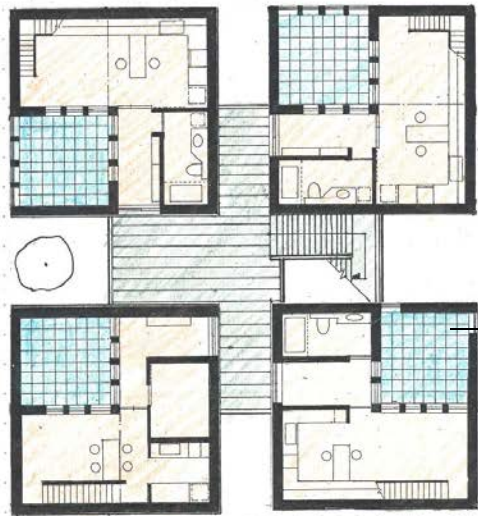


SECTION B-B



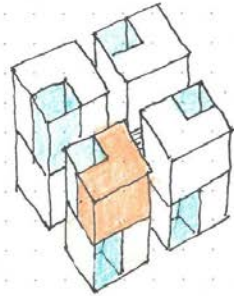
SECTION A-A

Basic residence block

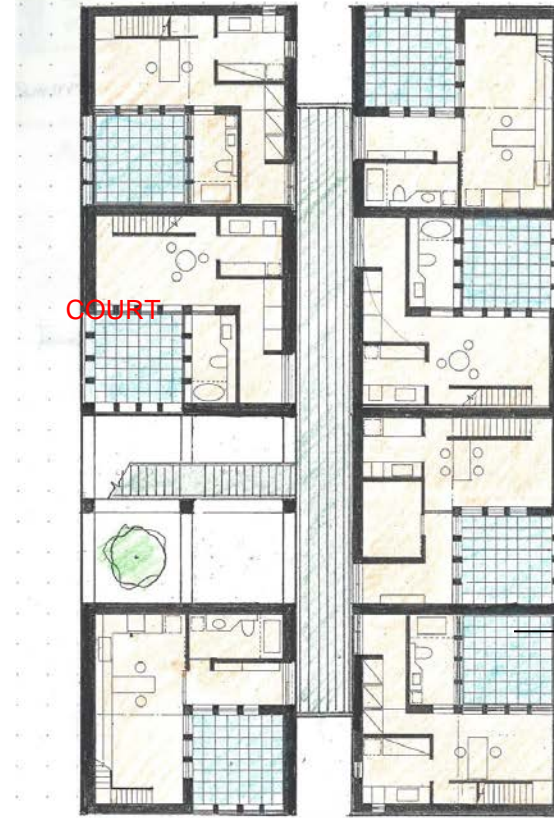


COURT

upper level PLAN



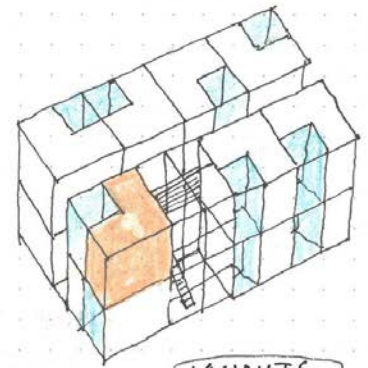
8 UNITS



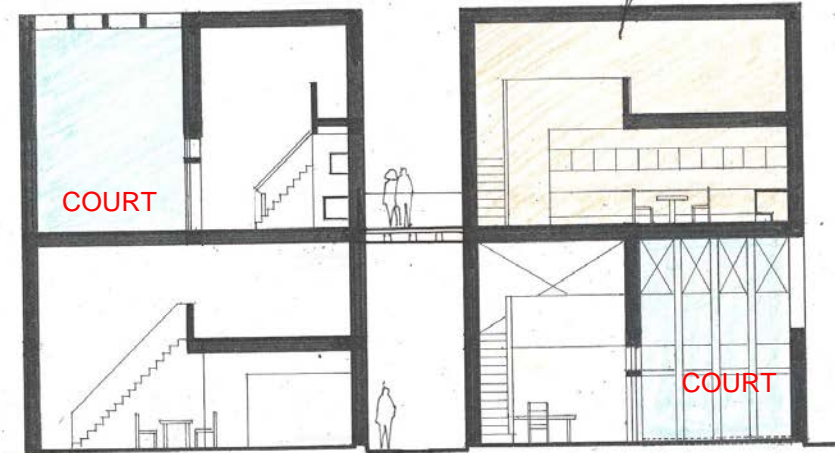
COURT

COURT

upper level PLAN



14 UNITS EX.



COURT

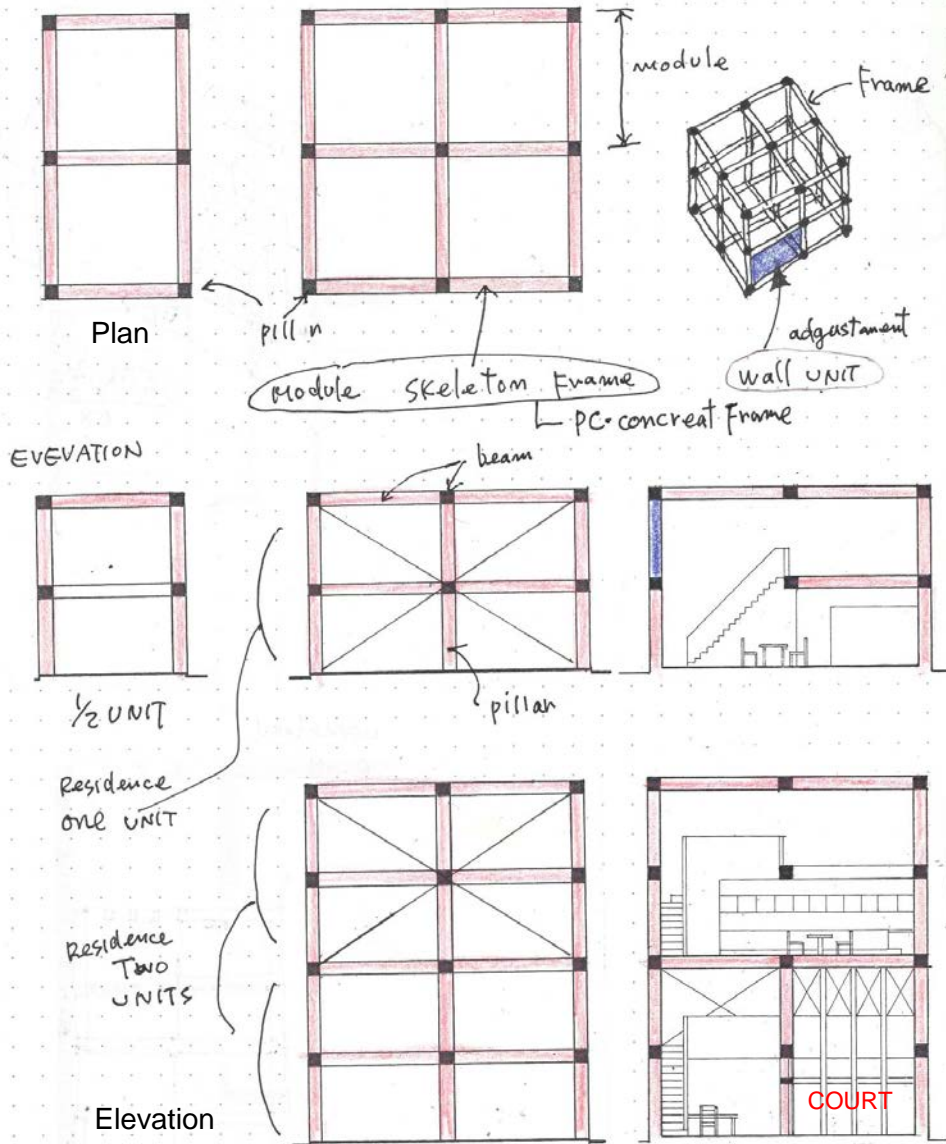
COURT

1 key unit

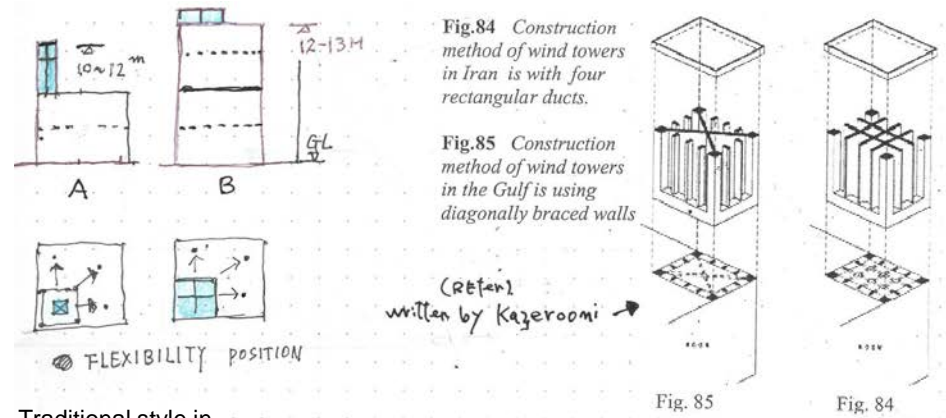
SECTION



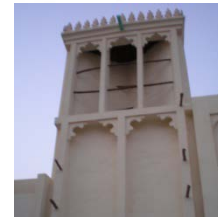
Summary of Skeleton system



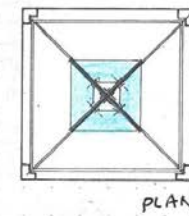
Wind tower unit



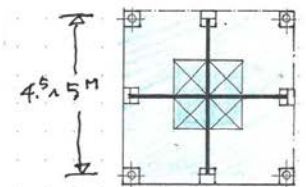
Traditional style in QATAR



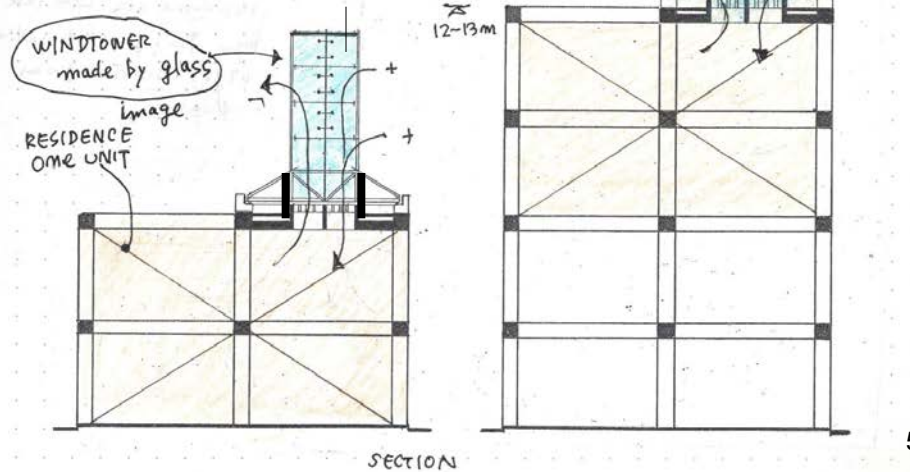
UNIT (A)



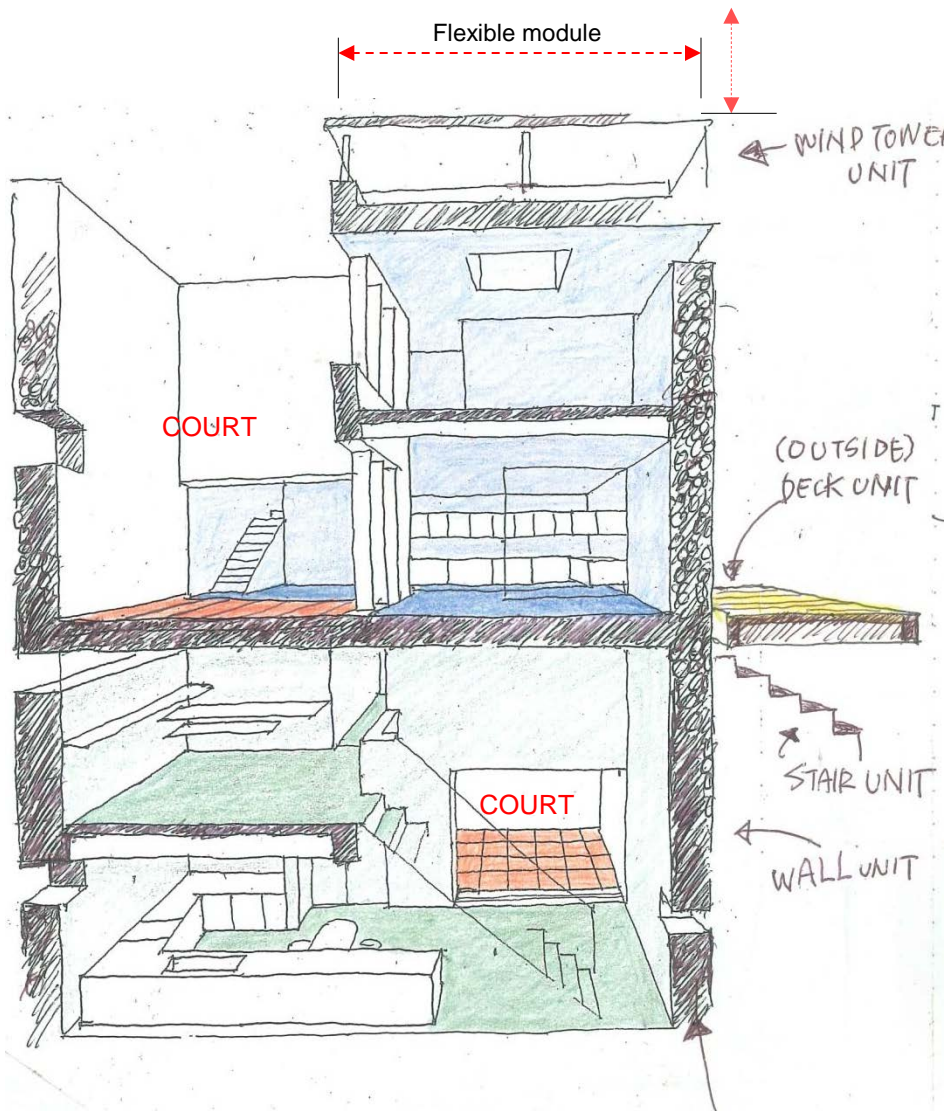
UNIT (B)



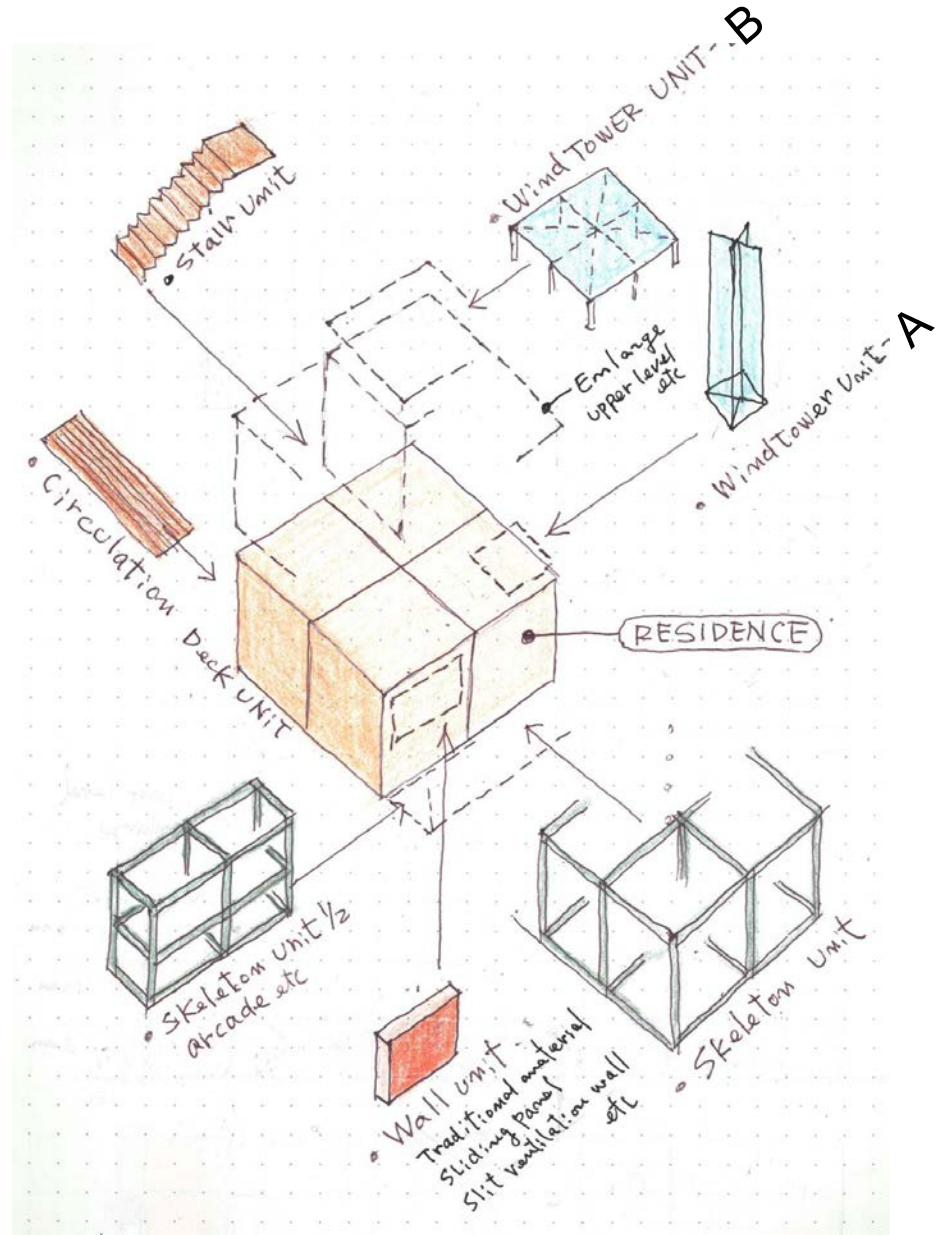
Structure of a heat shielding glass.



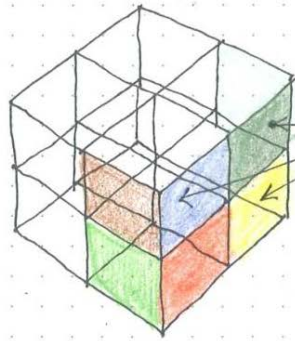
Structure unit/elements



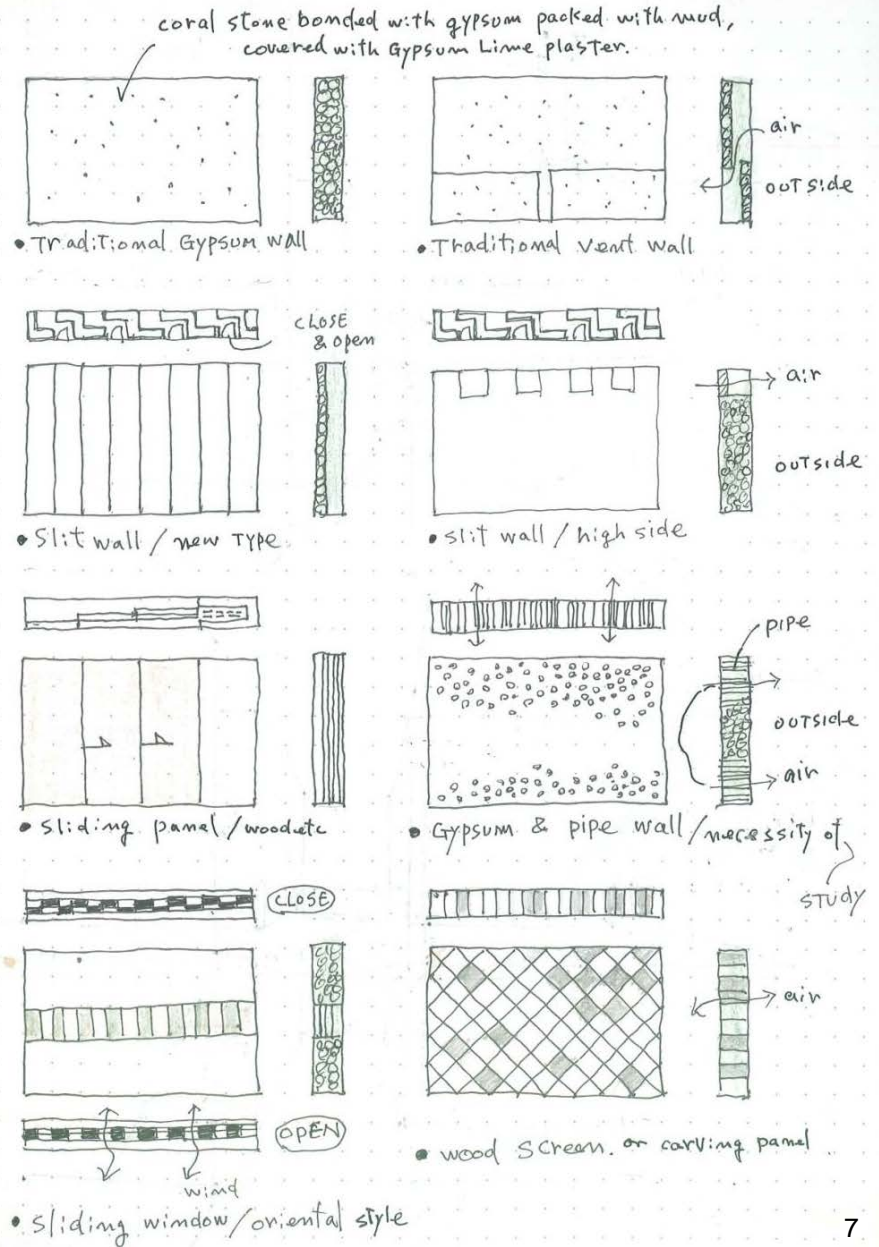
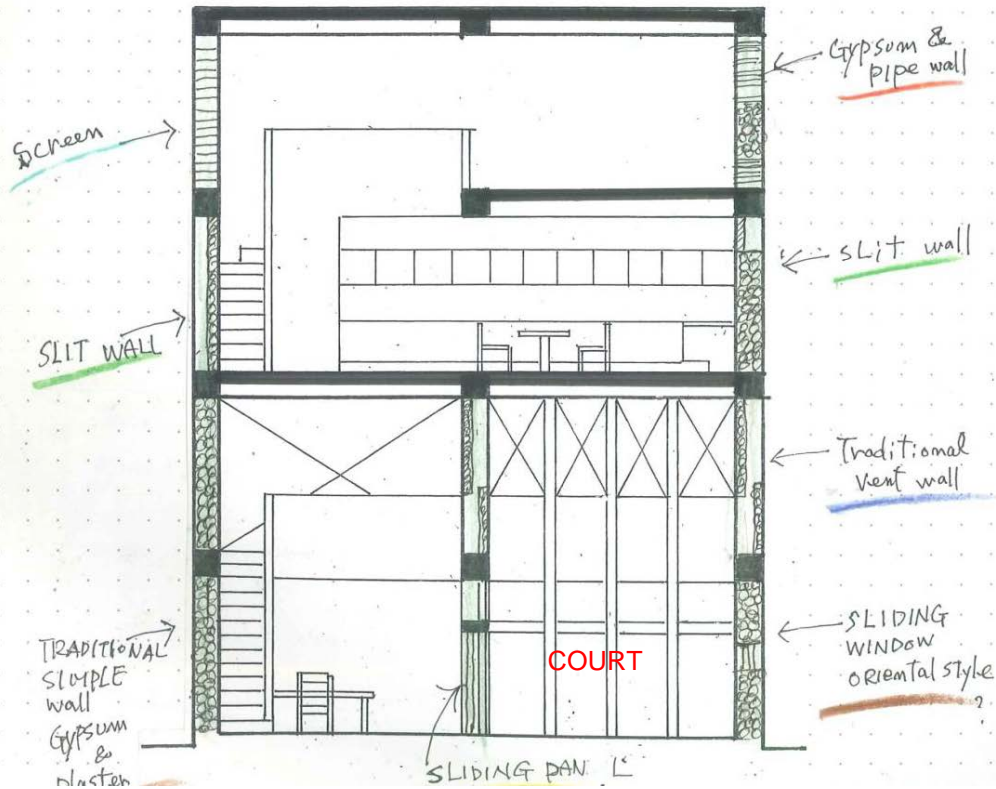
Explanation about the wall unit is a following sheet.



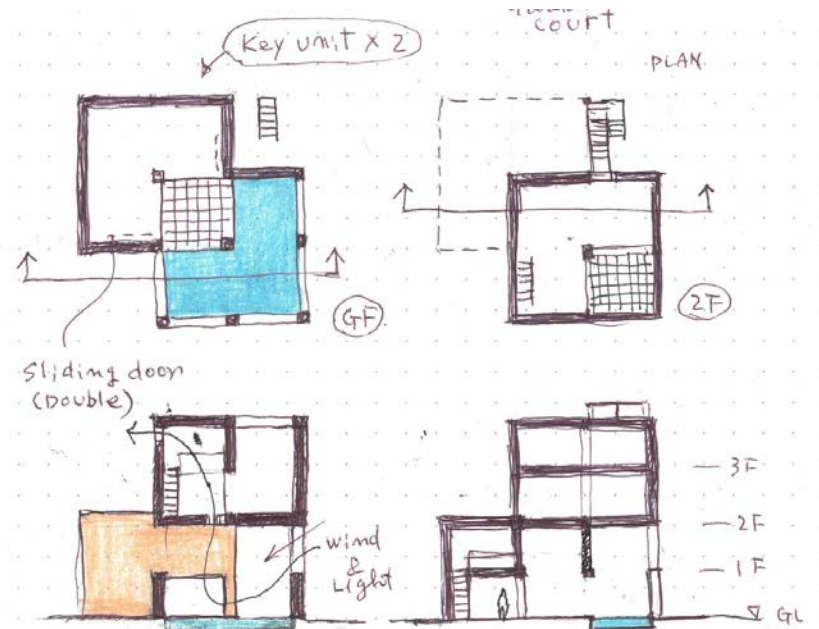
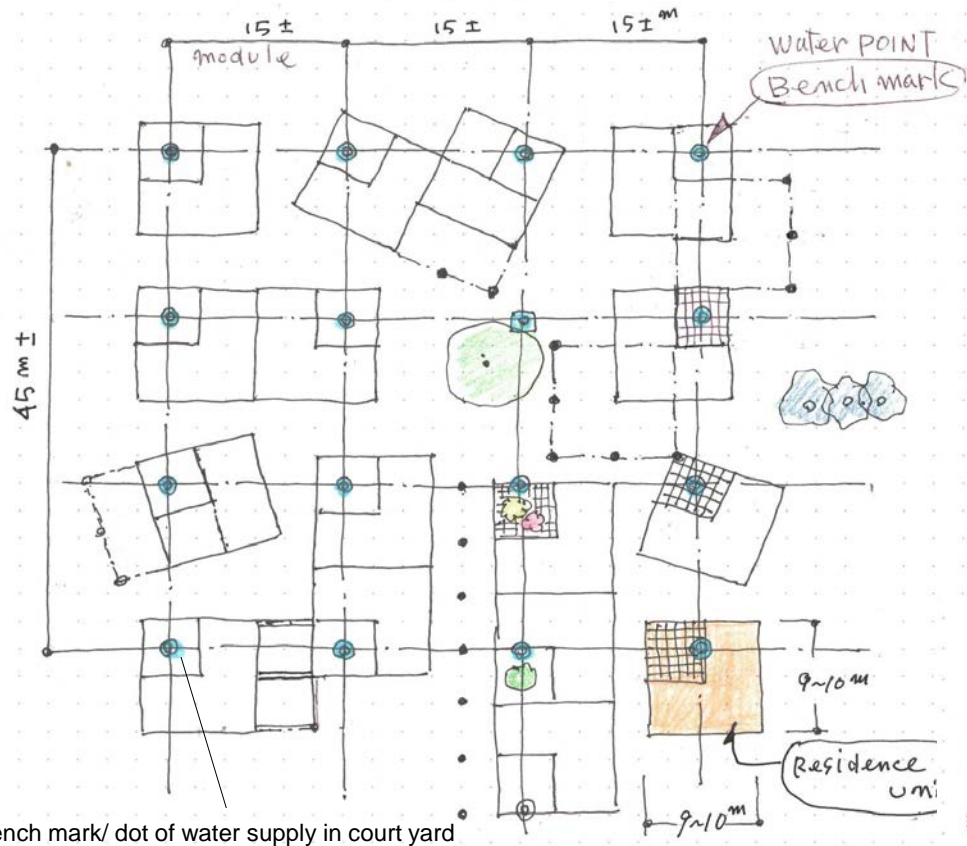
Wall unit program



selection of wall unit and material

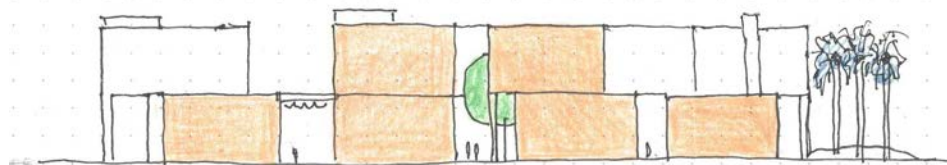


Additional program- Double type variation



Possibility of the surface of the water .Design image

contents of
sliding door (double)
1. wood
+
2. screen



The formation in housing with a bench mark.

